

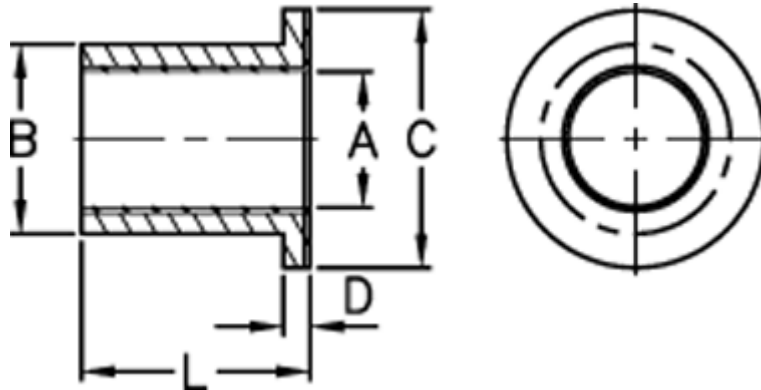
Data Sheet



Article number: 504120260302

Description: Sleeve bearing PSFM 2026-30 E

Measures



A max	= 20.084
A min	= 20.0420000000000002
B max	= 26.0560000000000001
B min	= 26.035
Bore "push-fit" max	= 26.0210000000000001
Bore "push-fit" min	= 26
Bore housing coarse fit max	= 26.081
Bore housing coarse fit min	= 26.0560000000000001

Bush weight kg	= 0.02035
Bush $\bar{\quad}$ external	= 26
Bush $\bar{\quad}$ internal	= 20
Flange outer diameter C	= 32
Flange width D	= 3
Length max	= 30
Length min	= 29.5
Shaft $\bar{\quad}$	= 20

Static load (